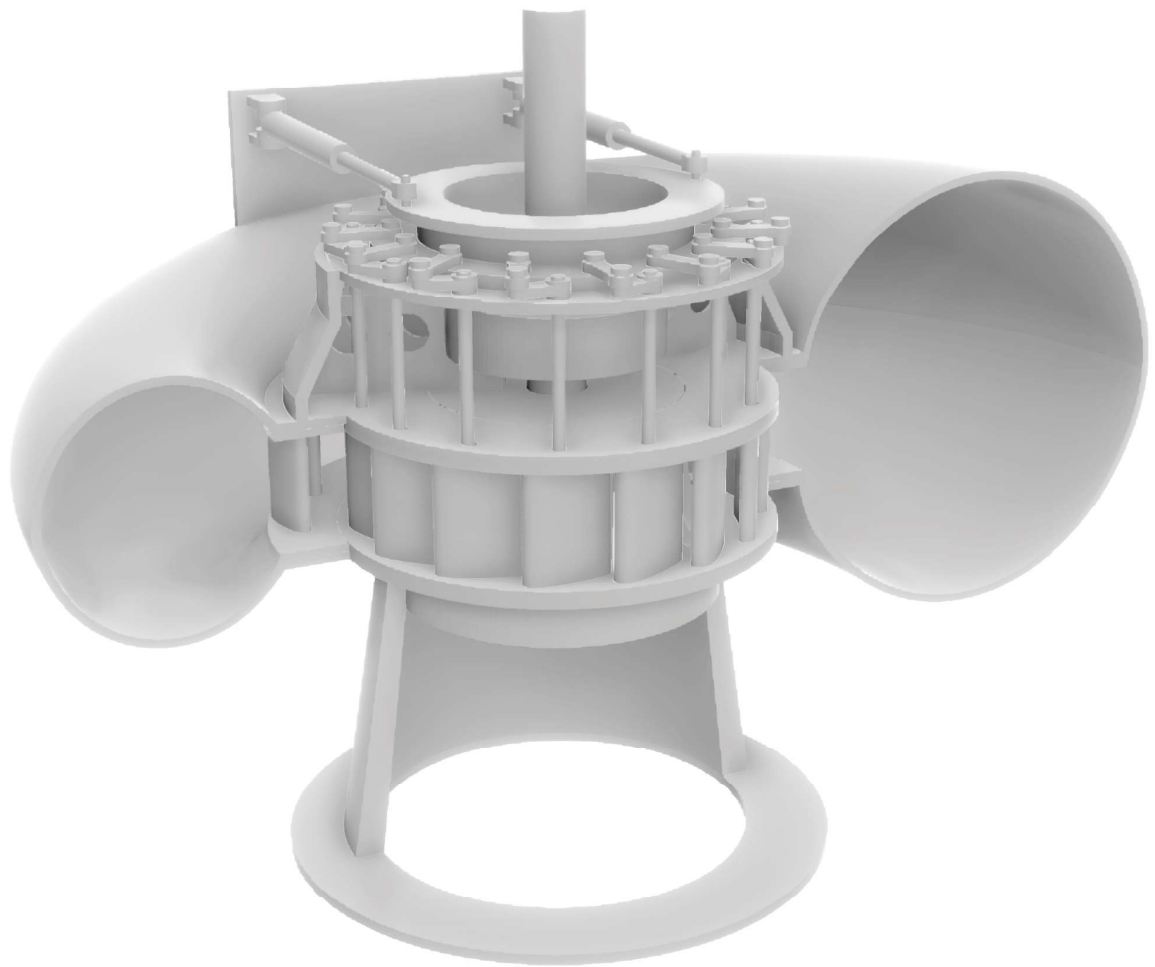


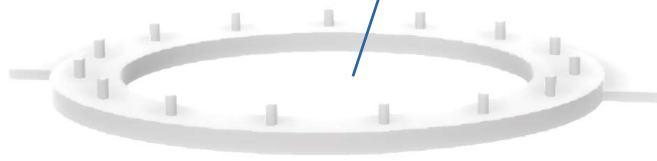
FRANCIS TURBINE



ASSEMBLY INSTRUCTIONS



01 STAY RING



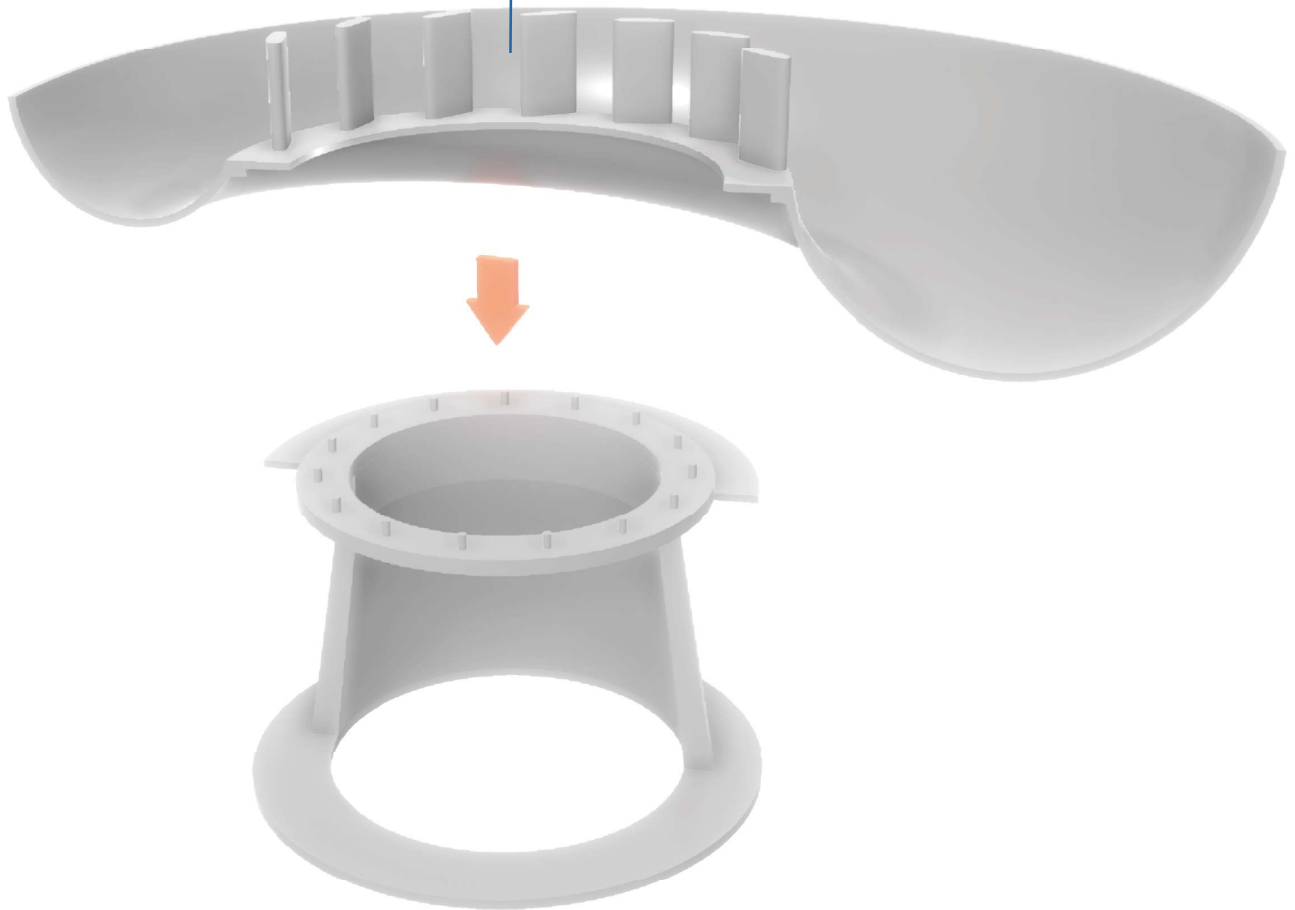
02 DRAFT TUBE



1



03 LOWER PART OF SPIRAL CASE WITH STAY VANES





04 UPPER PART OF SPIRAL CASE

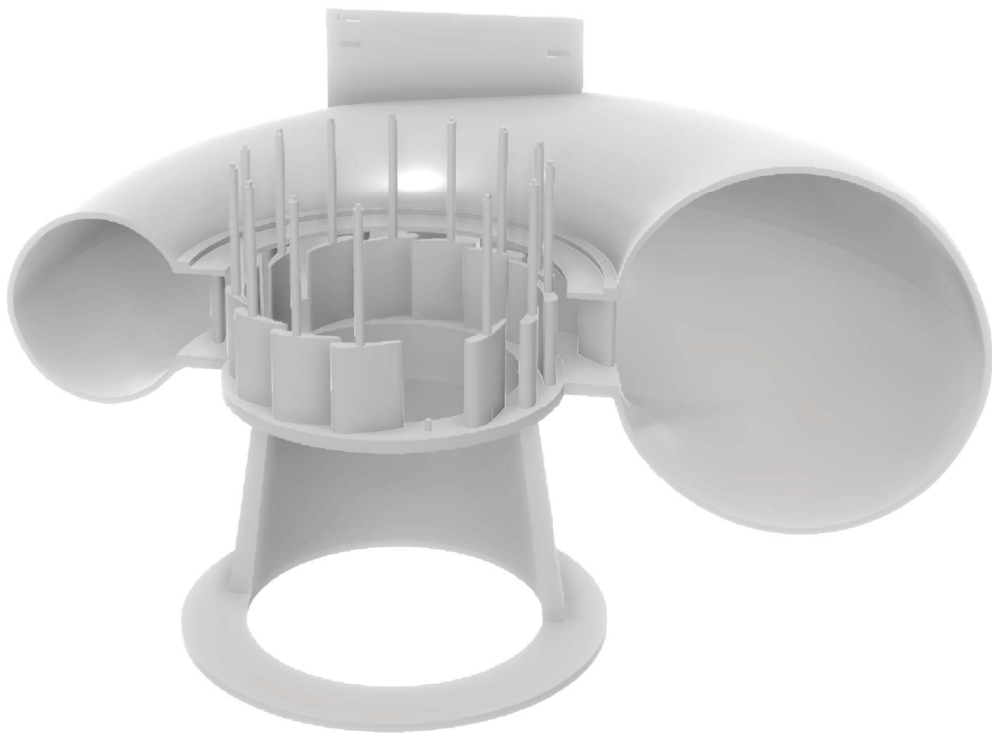




05 GUIDE VANE

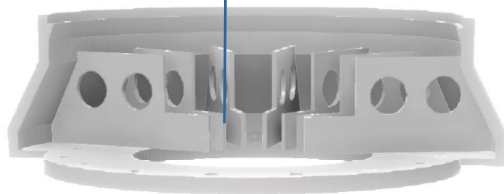


x15



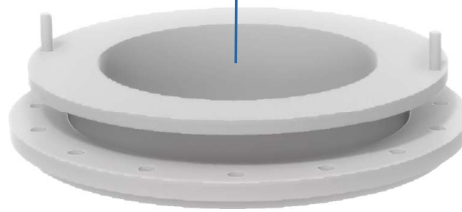


06 HEAD COVER

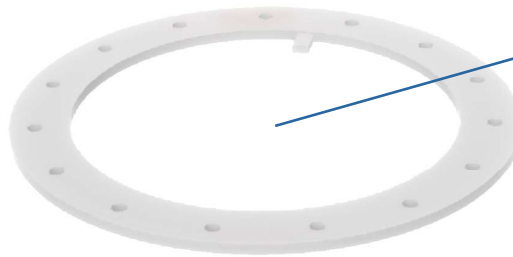




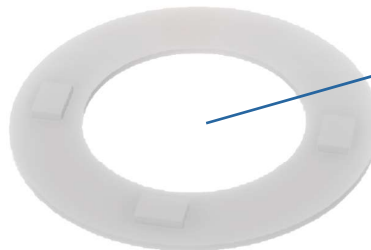
07 GATE OPERATING RING

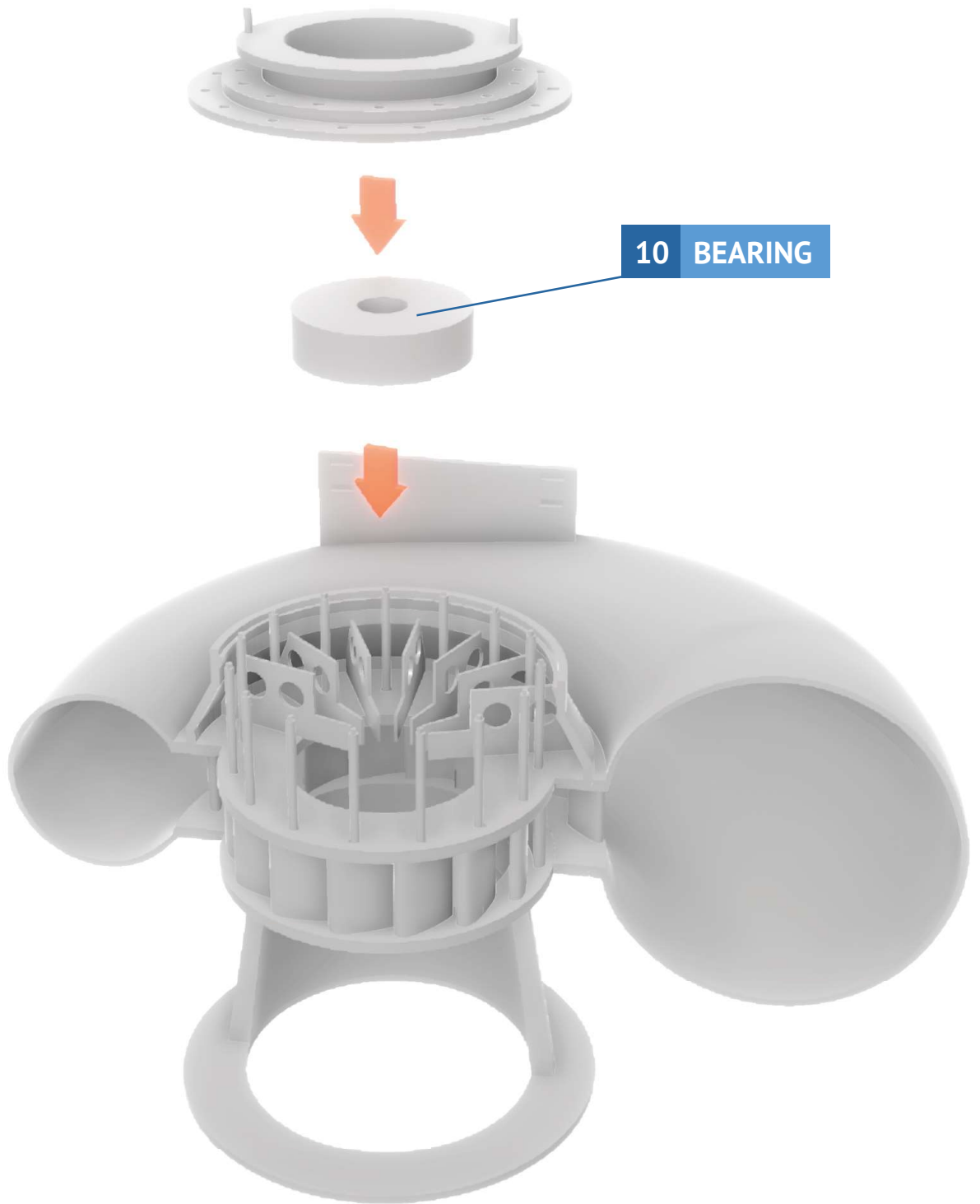


08 STATIONARY RING



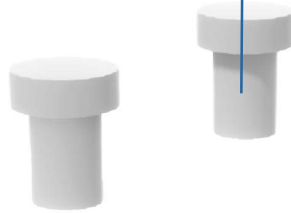
09 FIXING RING





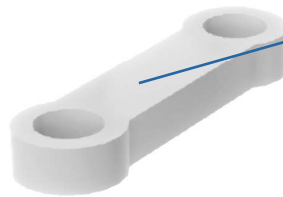


11 LINK PINS

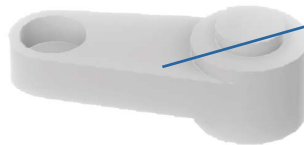


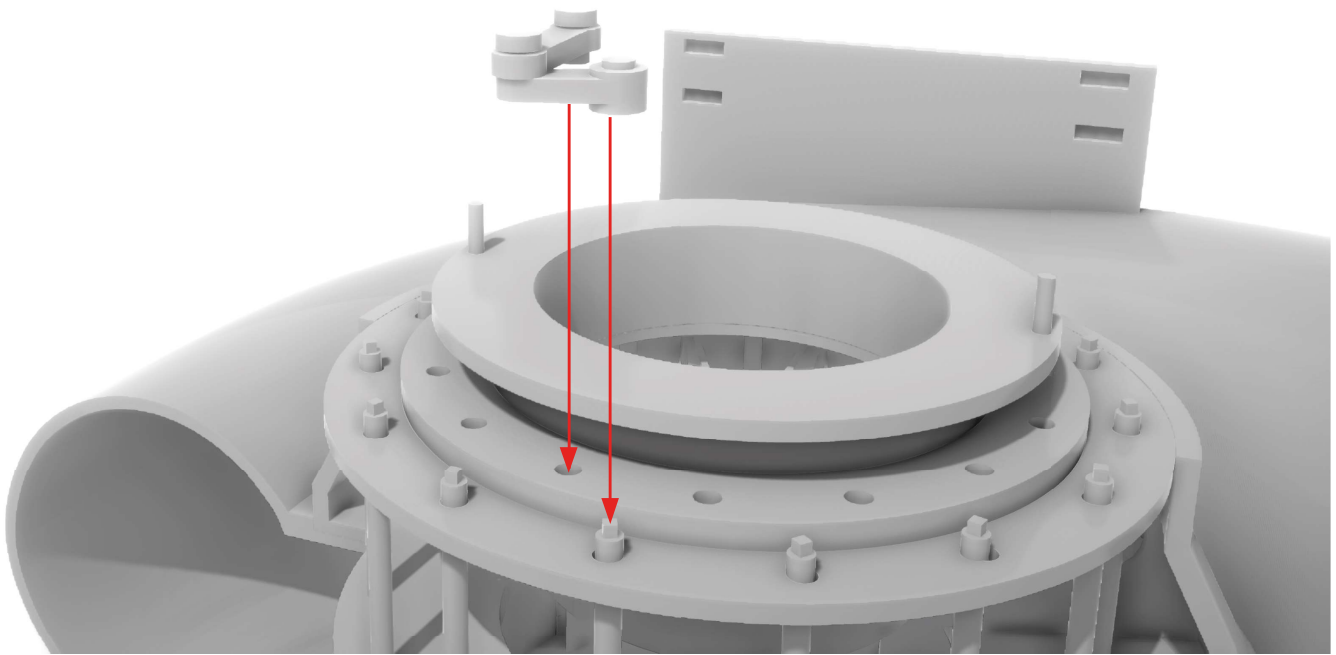
x15

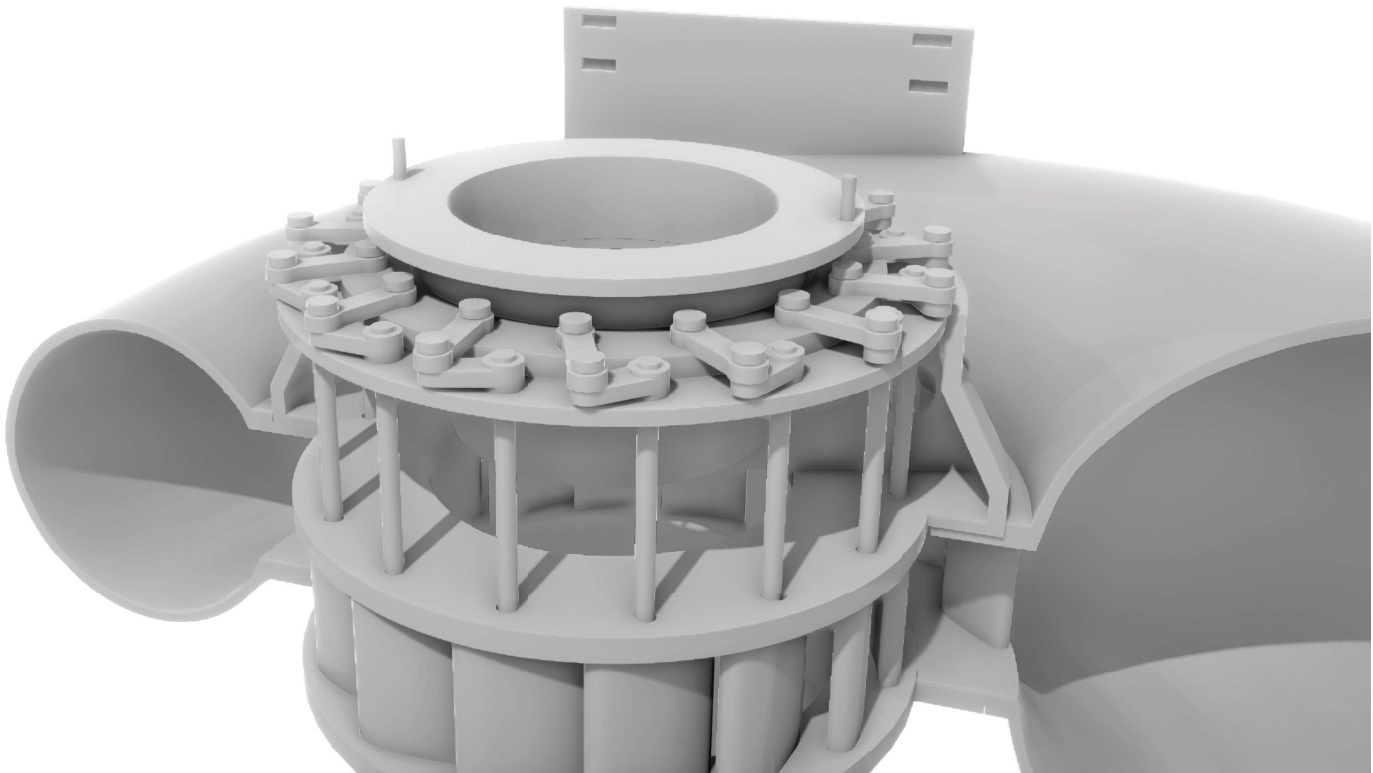
12 ARM ROD



13 GUIDE VANE ARM









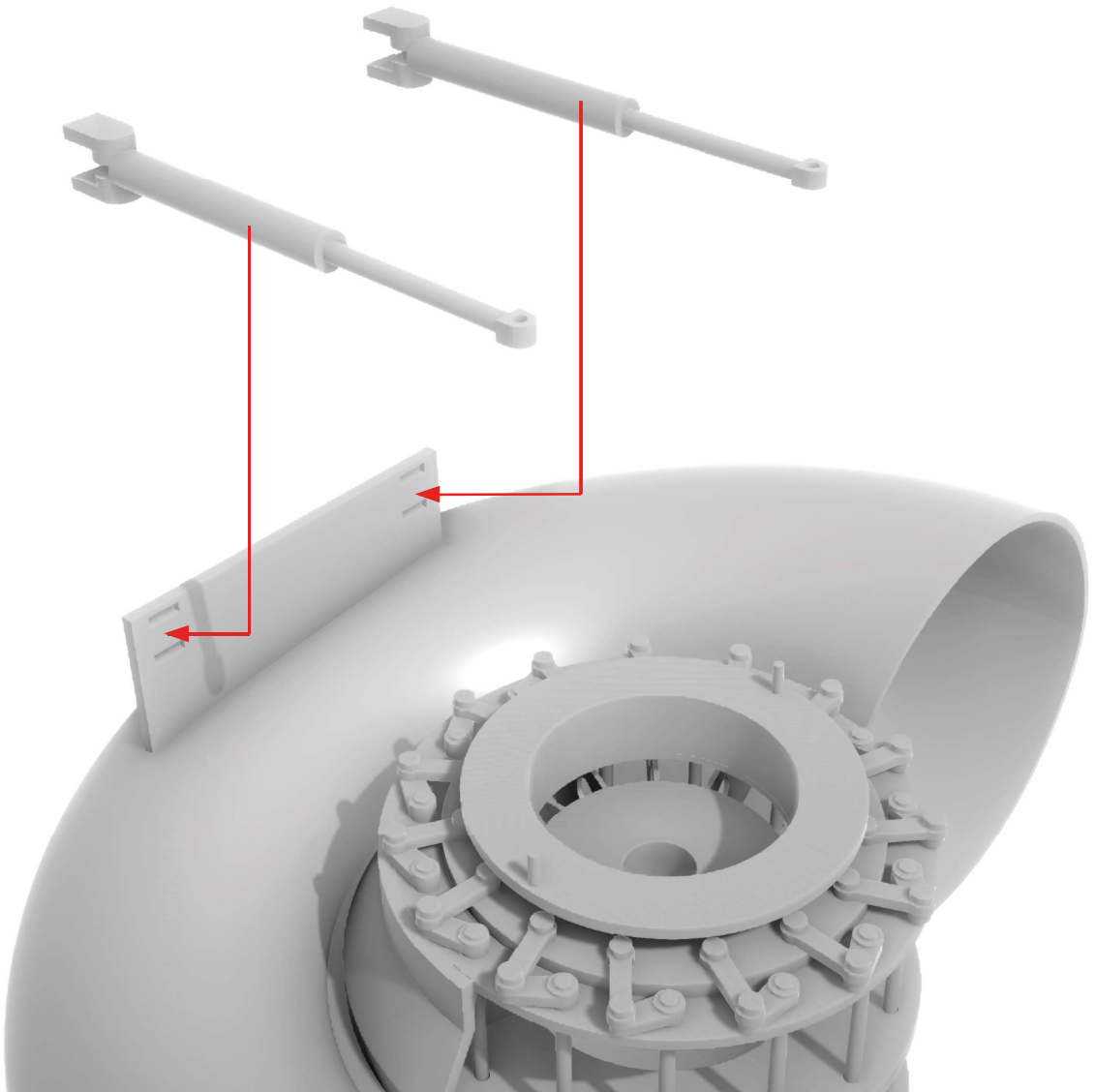
14 PIVOT PIN - UPPER PART

16 CYLINDER TUBE

17 PISTON ROD

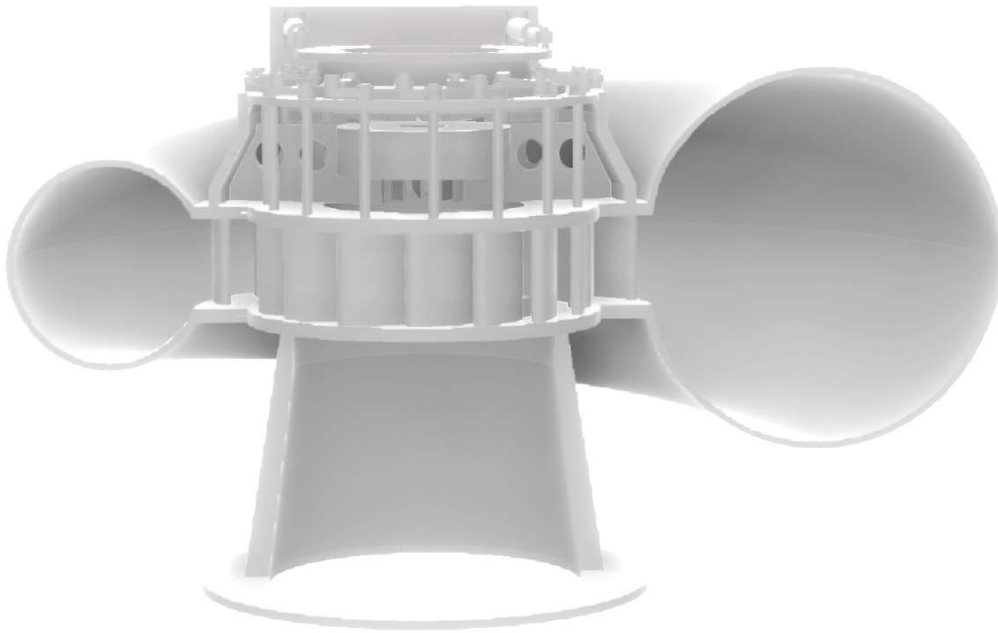
15 PIVOT PIN - LOWER PART

2x

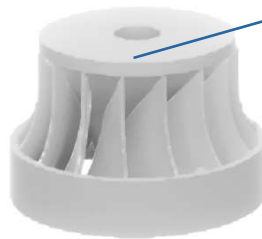




18 MAIN SHAFT



19 RUNNER



13