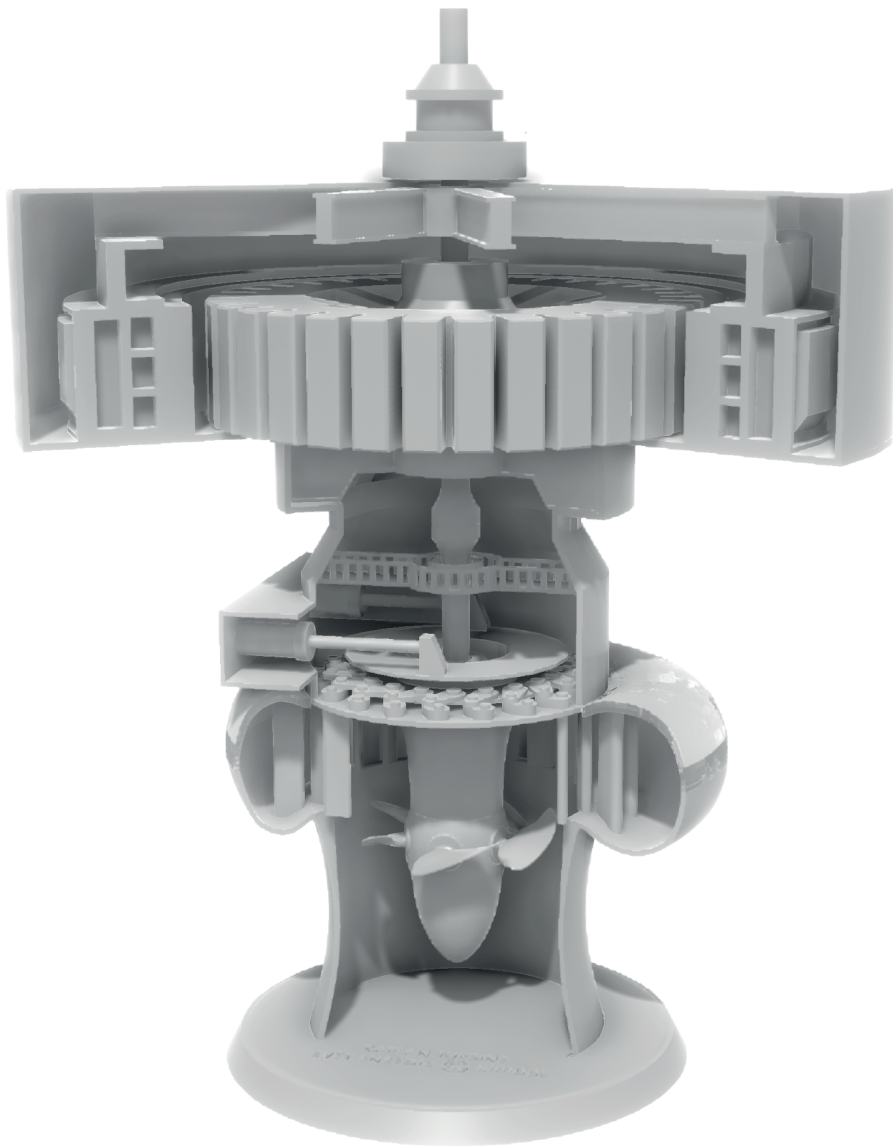


KAPLAN TURBINE



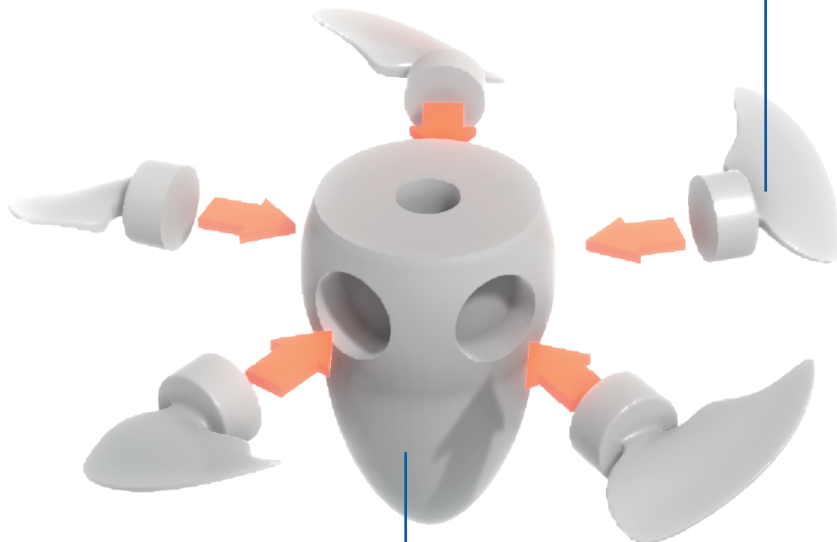
ASSEMBLY INSTRUCTIONS



01 UPPER HEAD COVER



03 TURBINE BLADES x5

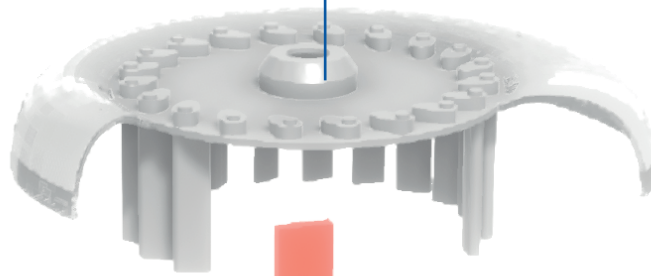


02 RUNNER HUB

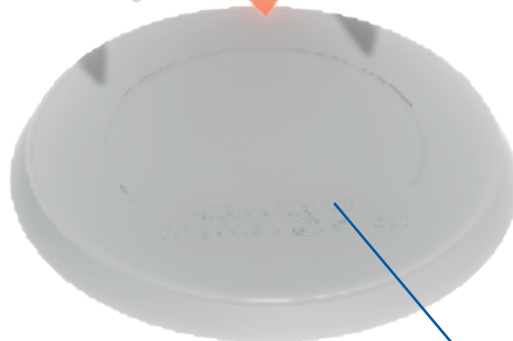
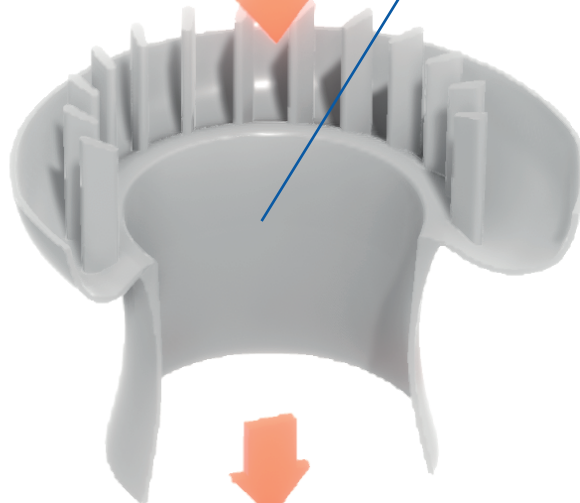
1



04 SPIRAL CASING WITH GUIDE VANES



05 SPIRAL CASING WITH STAY VANES AND DRAFT TUBE

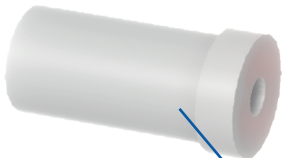
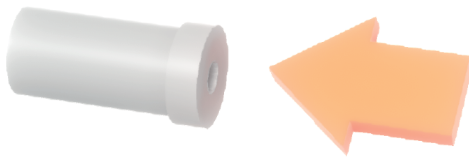


2

06 FOUNDATION



07 PUSH AND PULL ROD

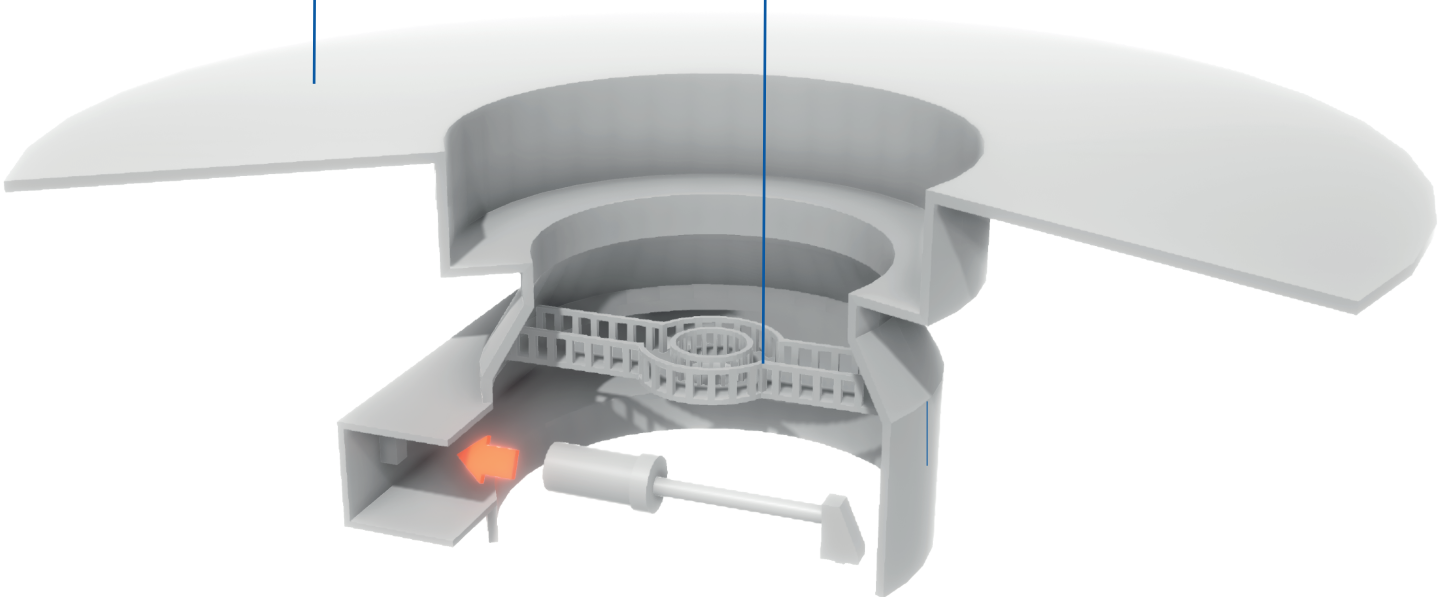


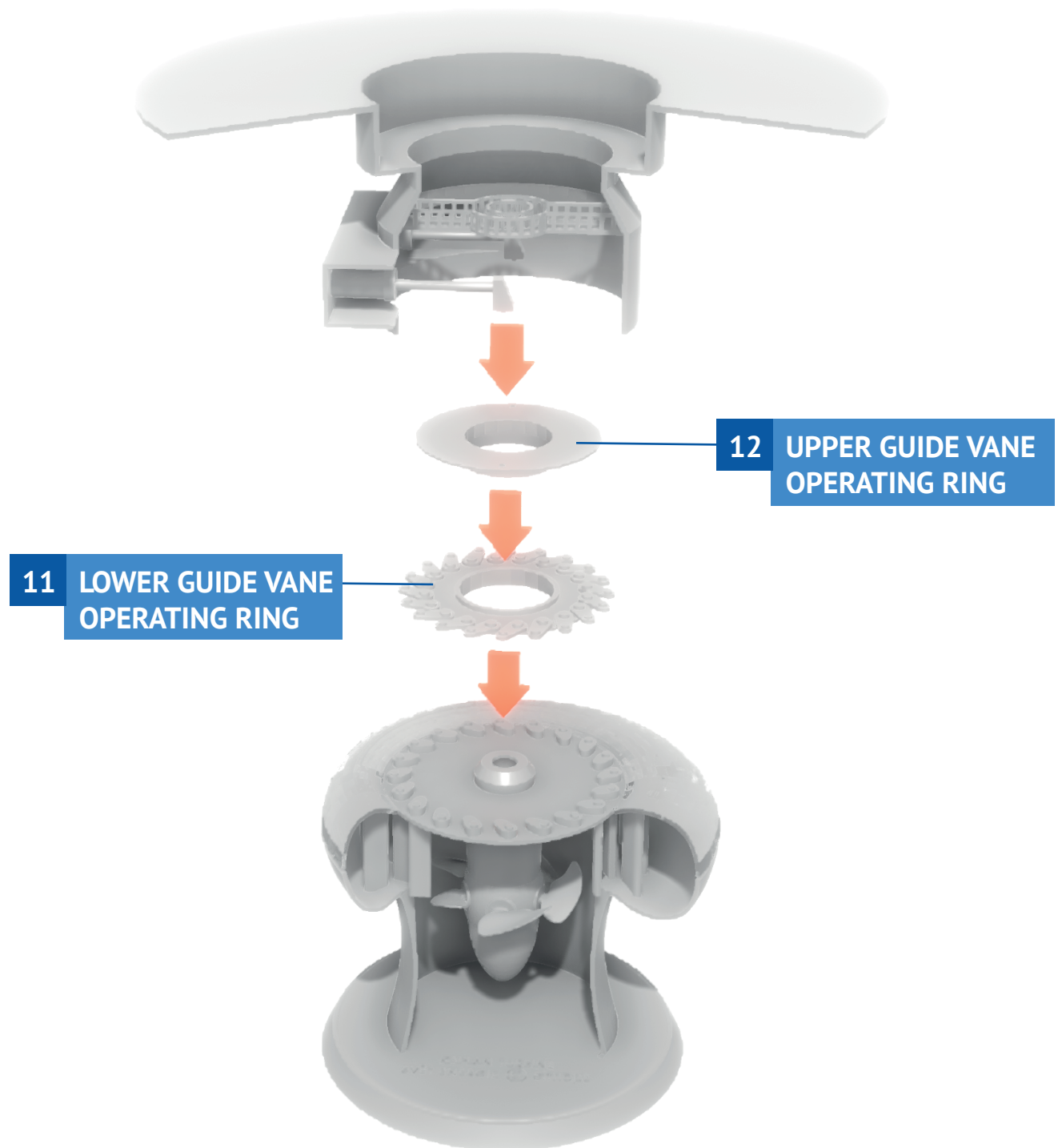
08 SERVOMOTOR

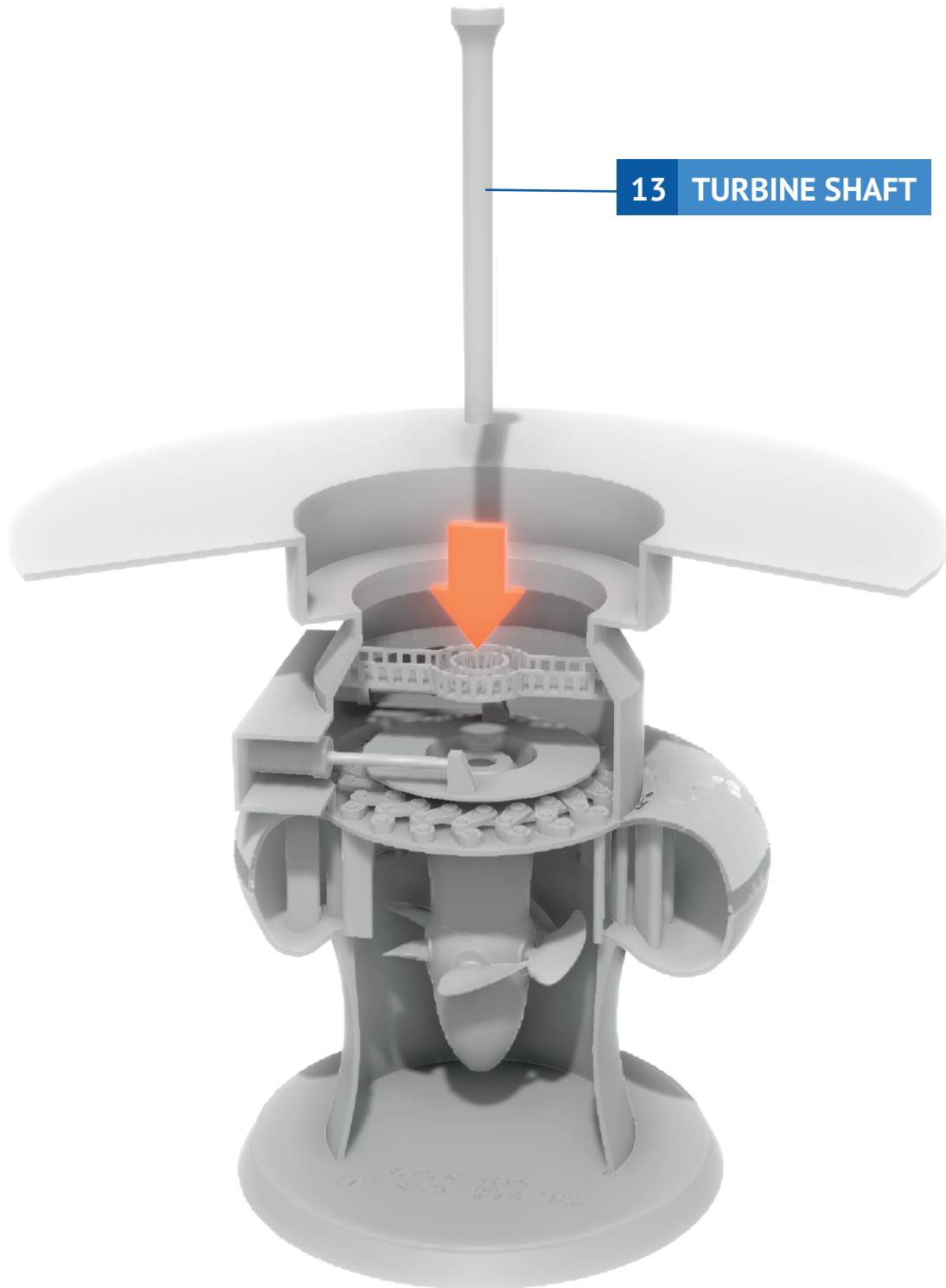


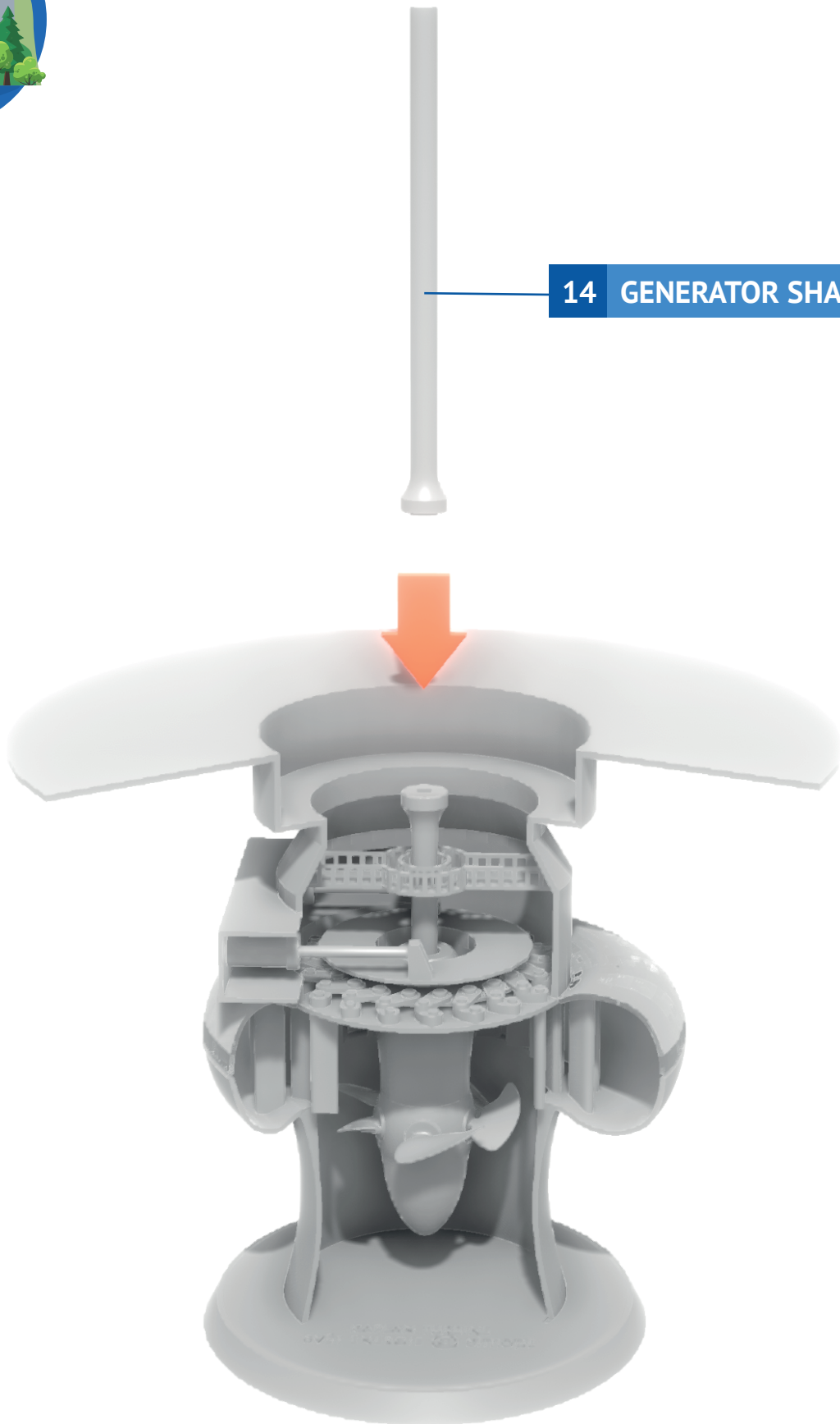
09 GENERATOR MOUNTING STRUCTURE

10 PIT PLATFORM





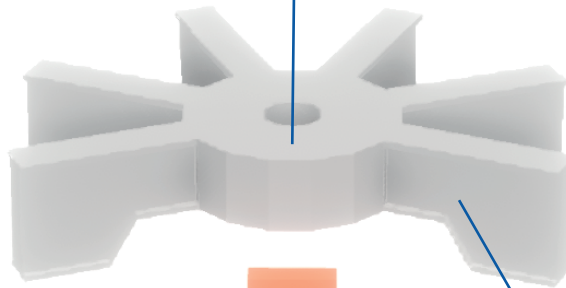




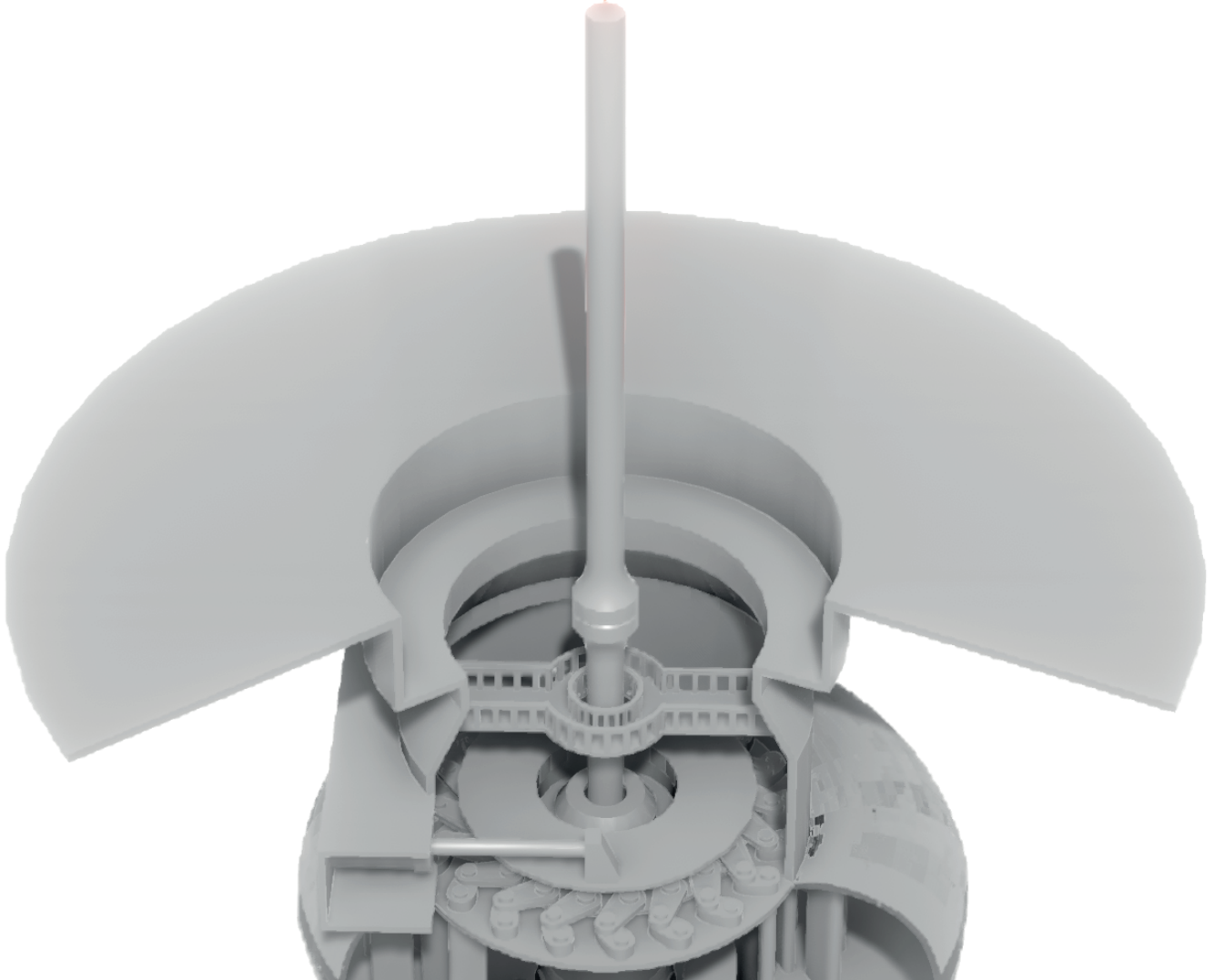
14 GENERATOR SHAFT



15 THRUST BEARING HOUSING

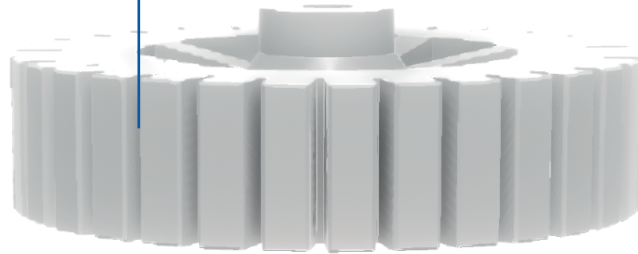


16 LOWER BRACKET ARM x6

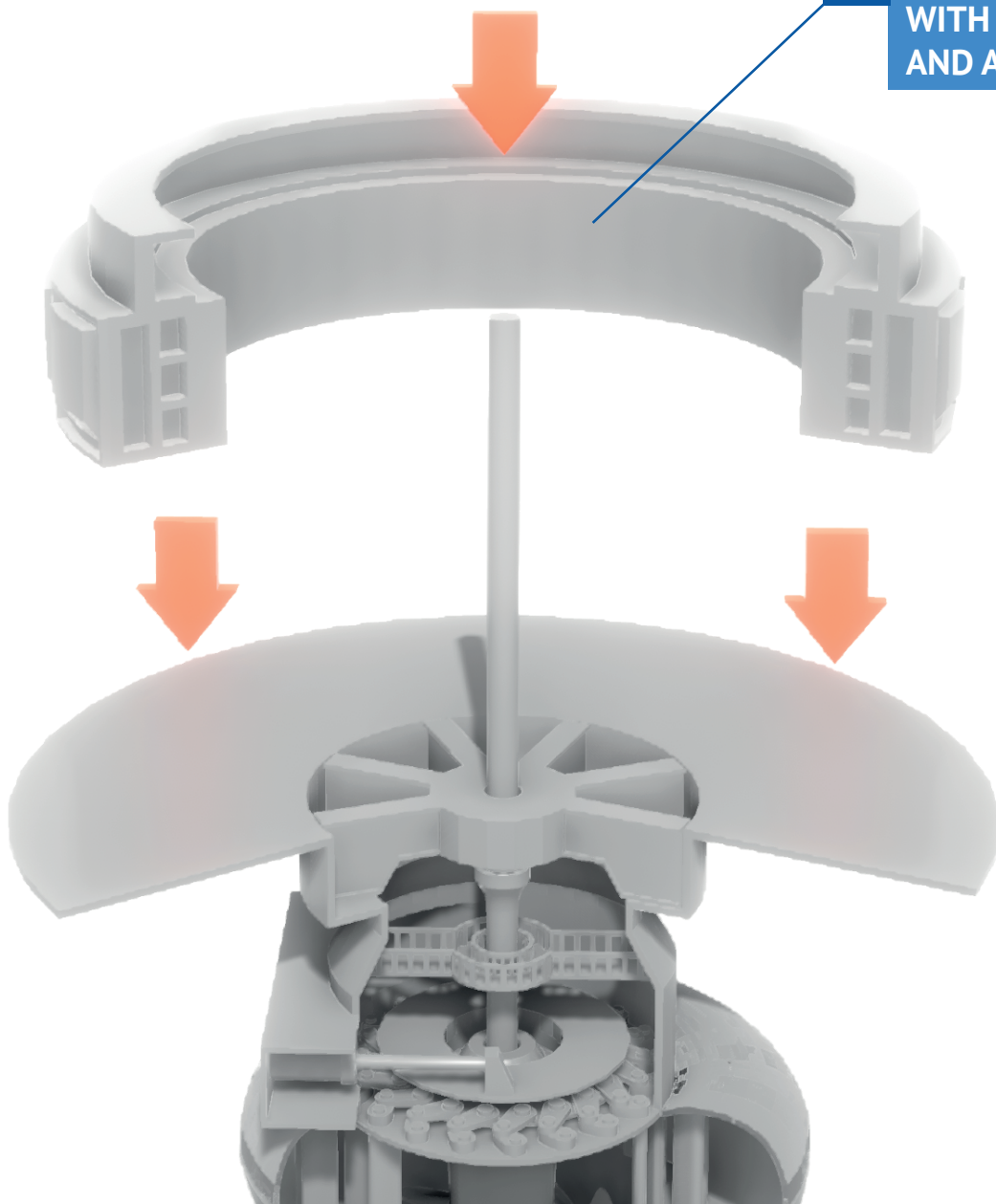




17 ROTOR SPIDER WITH POLES



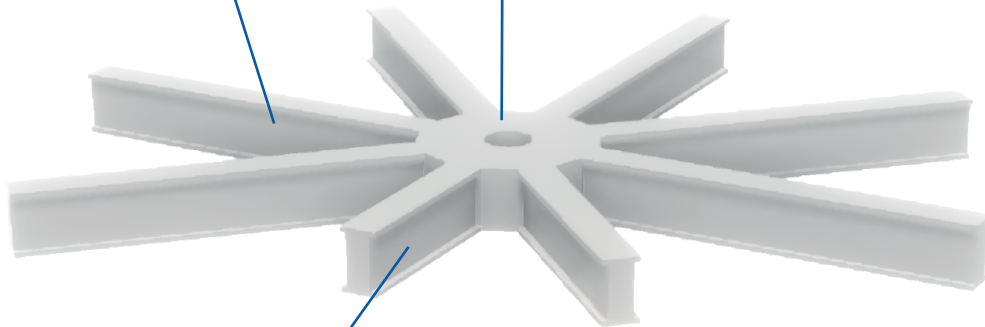
18 STATOR FRAME WITH WINDING AND AIR COOLERS



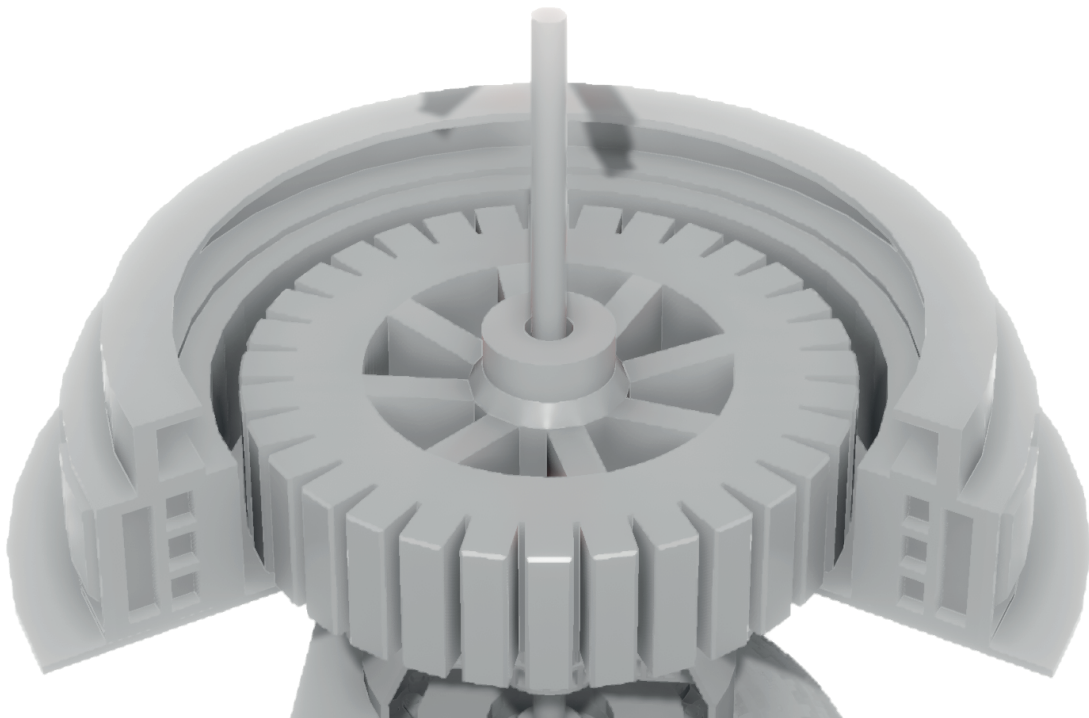


19 CENTRAL PART OF UPPER BRACKET

20 LONG UPPER BRACKET x6



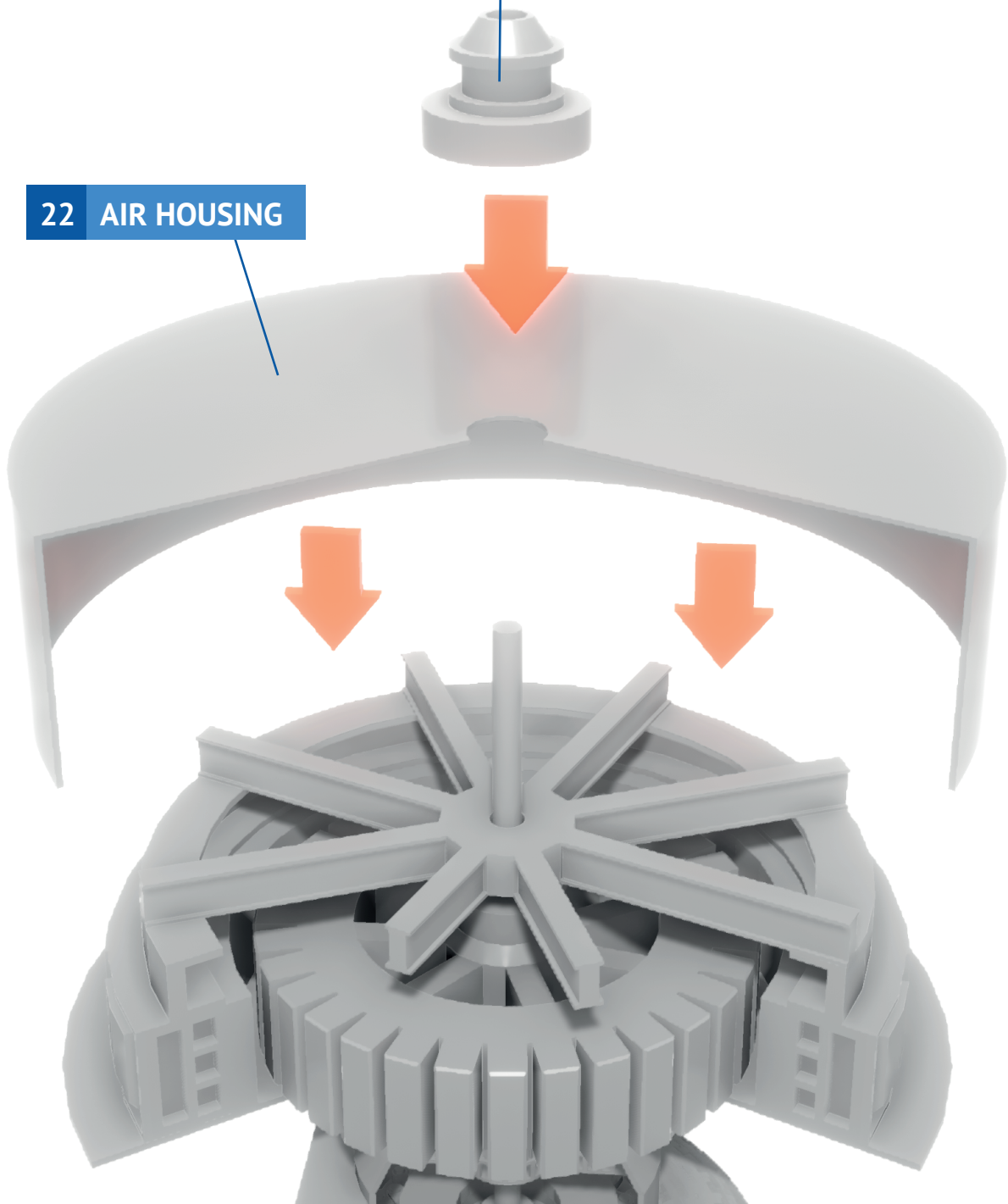
21 SHORT UPPER BRACKET x2





22 AIR HOUSING

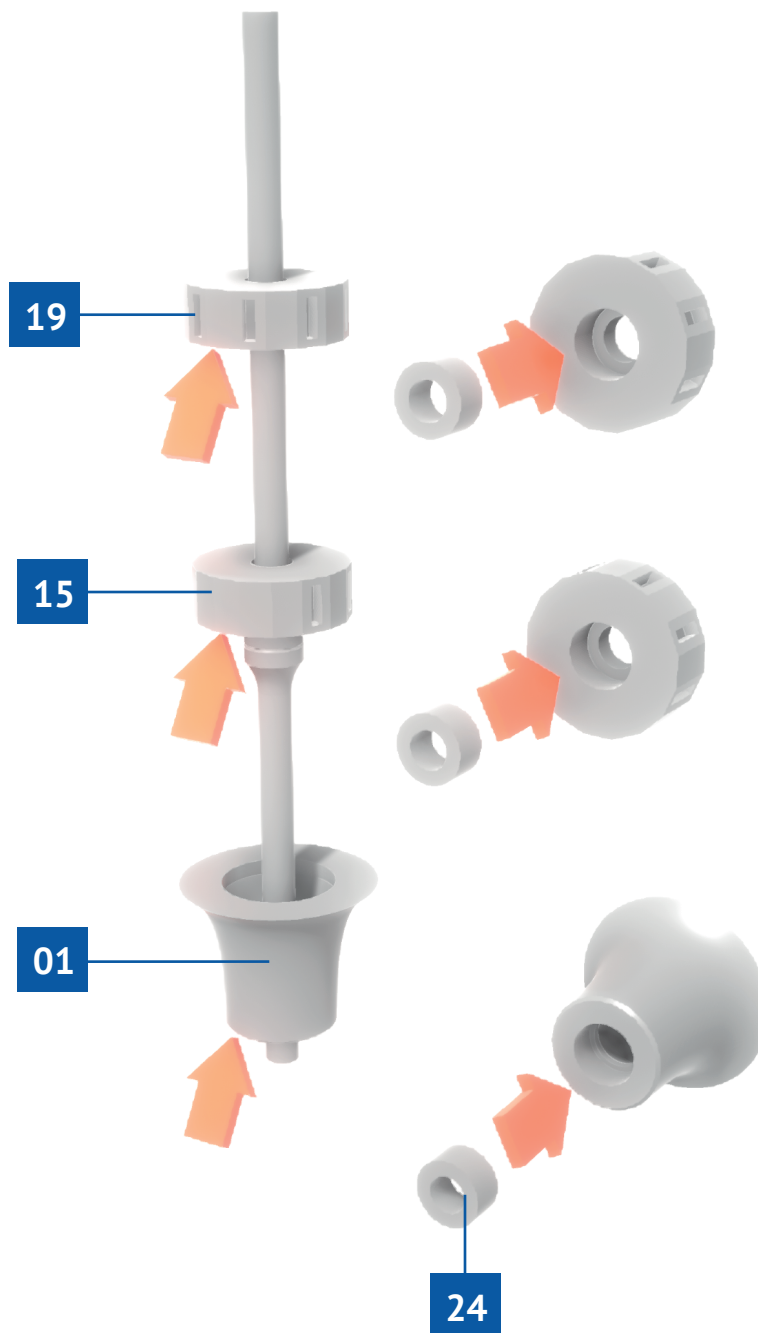
23 CONTROL HEAD FOR TURBINE BLADES





Parts No.1, 15 and 19 are made for bearing insertion to hold the shaft. The parts are adapted for the use of bearings with dimensions:

19mm (outer diameter)
10 mm (inner diameter)
5 mm (height)



If you do not want to use bearings print part No.24 instead and glue it to the shaft to hold it in place.